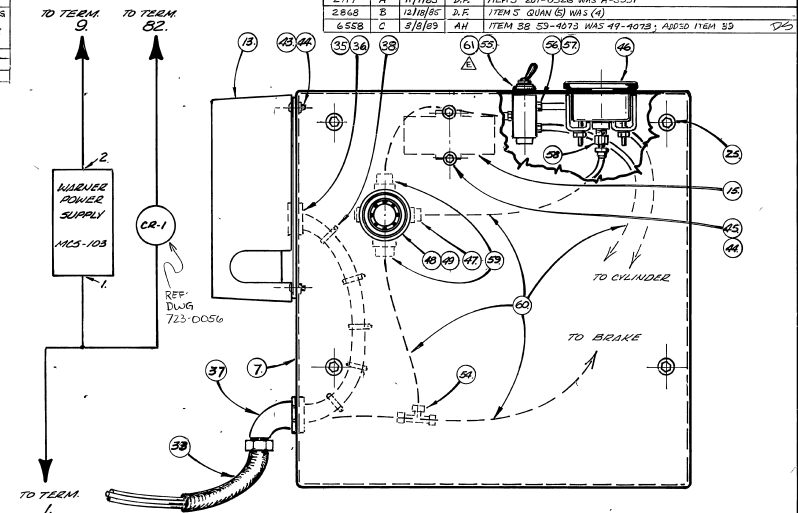
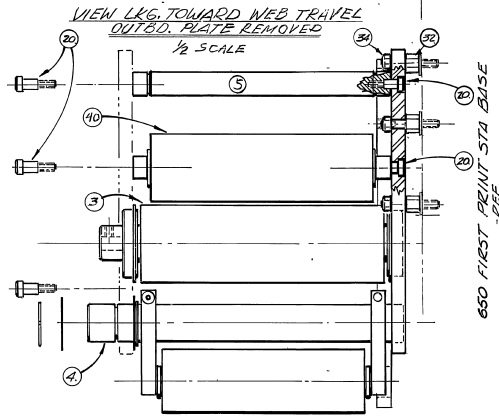
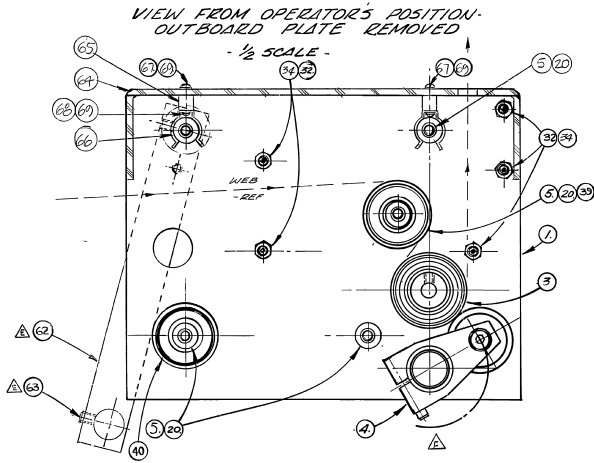


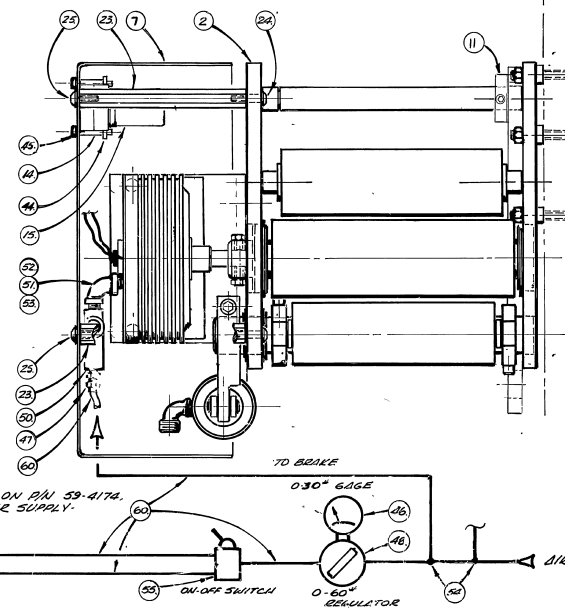
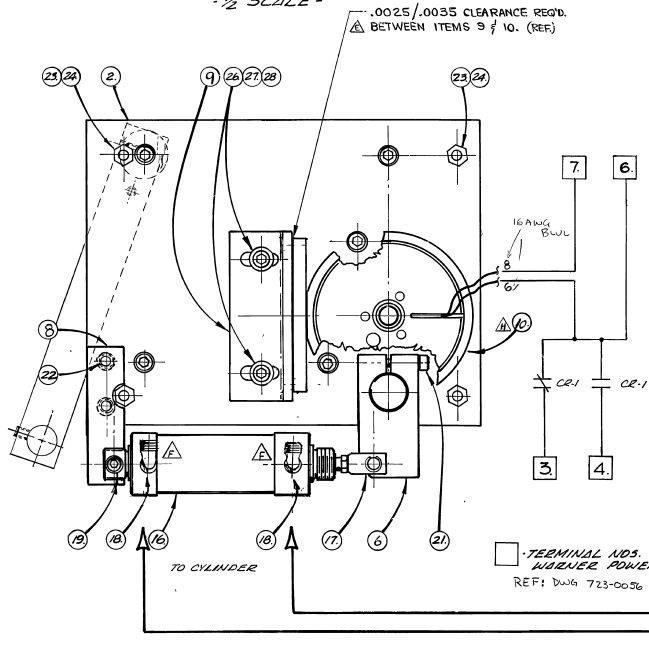
ECN NO.	REV.	DATE	BY	DESCRIPTION
6955	D	5/8/82	AH	DWG UPDATE TO MATCH MRP II B.O.M. CLEANUP PROGRAM
7793	E	12/19/89	AH	ADDED ITEM #14 62 CALIBR ON DWS; ADDED ITEM #3 CALIBRATION DING TABLE; ITEM #1 202-0315 WAS 101-0973; ITEM 26 20-4509 WAS 20-4510; ITEM 33 SFT WAS AIR; ADDED NOTE -.0025/.0035 CLEARANCE REQ'D BETWEEN ITEMS 9 & 10 (REF)
93078	F	4-10-93	EF	SEE E.C.T.
10787	G	1/22/97	SC	ADDED ITEM# 64, 65, 66, 67, 68, 69
62765	H	3/14/99	RFZ	ADDED ITEM# 111 - CRY. TEMP. ST. 111 (S)

ECN NO.	REVISION	DATE	BY	DESCRIPTION
2717	A	11/19/85	D.F.	ITEM 5 201-0356 WAS A-5391
2868	B	12/18/86	D.F.	ITEM 5 QUIN (S) WAS (4)
6558	C	3/8/89	AH	ITEM 38 59-4073 WAS 49-4079; ADDD ITEM 39



VIEW FROM OPERATOR'S POSITION - COVER REMOVED - 1/2 SCALE -

ASSEMBLED VIEW LKG. TOWARD WEB TRAVEL - COVER SHOWN IN SECTION - 1/2 SCALE



60	8	40-405B	#8 WASHER	34	5	49-4016	4-20 NYLOCK NUT
68	4	21-4201	#8-32 X 1/4 LG. S.H.S.C.S.	33	3	59-4085	1/2" LIQUID TITE (3" LENGTH)
67	4	21-4202	#8-32 X 3/8 LG. S.H.S.C.S.	32	5	101-0193	3/8 LG. 3/4" UR. STANDOFF
66	4	40-4005	CLIP	31			
65	4	101-2317	STANDOFF, CLIP	30			
64	1	301-280B	COVER, IN FEED	29			
63	2	22-4082	5/16-18 X 1/2 LG. S.H.S.S. (OVAL)	28	2	49-4027	ESNA STOP NUT 3/8"-18
62	1	201-0262	EDGE GUIDE PLATE	27	4	40-4002	3/8" O.D. FLAT WASHER
61	1	202-0315	LABEL ON/OFF NIP ROLL	26	2	20-4309	3/8" 18X 1 1/2 LG. S.H.S.C.S.
60	2	62-4901	CLEAR POLY AIR TUBING	25	4	21-4405	3/4" 20X 3/16 LG. S.H.S.C.S.
57	2	62-4037	FITTING - 7/8" X 1/2" NPT	24	4	21-4407	3/4" 20X 1/4 LG. S.H.S.C.S.
56	1	62-4030	FEMALE TUB. FIT. / PLUG / 3/4" NPT	23	4	101-0169	3/8" UR. STANDOFF - 5/8 LG. 3/4-20
57	3	62-4087	CLIPBOARD FITTING	22	2	20-4606	3/8" 16X 3/8 LG. S.H.S.C.S.
56	3	62-4087	GASKET WASHER	21	1	20-4611	3/8" 16X 2" LG. S.H.S.C.S.
55	1	60-4033	AIR SWITCH	20	10	26-4503	3/8" S.H. SADDLER SCG. 1/2 LG.
54	3	62-4044	1/2" TUBE FEE	19	1	26-4606	3/8" S.H. SADDLER SCG. 1/2 LG.
53	1	63-4201	1/2 NPT. CLOSE NIP	18	2	62-4045	AIR FITTING - 90°
52	1	63-4202	1/4 NPT. CLOSE NIP	17	1	61-4044	BIMBA CLEVIS ASSY. D20-3
51	1	63-4153	90° EL. 1/2" NPT	16	1	61-4052	BIMBA 3/16 DIA AIR CYL.
50	1	60-4201	FLOW CONTROL	15	1	52-4037	RELAY
49	1	60-4112	REGULATOR NUT	14	1	59-4282	RELAY SOCKET
48	1	60-4105	AIR PRESS. REGULATOR	13	1	59-4174	WANNER POWER SUPPLY #653
47	2	62-4044	FITTING - 1/2" X 1/2" NPT	12			
46	1	64-4001	0-30" AIR PRESS. GAGE	11	1	091-4205	SPLIT SHAFT COLLAR
45	2	20-4207	"B-32 X 1/2 LG. S.H.S.C.S.	10	1	C-50513	BERKE-MAGTROL MOUNTING BRACKET
44	6	47-4508	"B-32 NUTS	9	1	C-5927	MOUNTING BRACKET - MAGTROL UNIT
43	4	21-4203	"B-32 X 1/2 LG. S.H.S.C.S.	8	1	A-5926	ACTUATOR CYL. MOUNTING BRKT.
41	1			7	1	D-5925	UNIT COVER
40	2	101-055	EXTER. ROLL - NOT COVERED.	6	1	A-30548	AIR CYLINDER ACTUATOR ARM
39	4	44-4021	EXT. RET. RING - 1 1/8" DIA.	5	5	201-0326	FIXED IDLER SHAFT
38	3	57-4073	TYP. ROPS	4	1	O-5924	FIXED ROLL SUB ASSY.
37	2	59-4157	90° ELK. FITTING	3	1	O-5923	ROLL ROLL SUB ASSY.
36	1	59-4110	3/8" LOCKWASH	2	1	O-5922	OUTBOARD PLATE
35	1	59-4119	1/2" O.E. WASHER	1	1	O-5921	WARRANTY PLATE

GEOMETRIC SYMBOLS / CHARACTERISTIC		MATERIAL	FINISH	STD DIM TOL
□	FLATNESS			DEC ± .005
—	STRAIGHTNESS			D15
∥	ALIGNMENT			ANGLES ± 0°30'
∥	PARALLELISM			
⊥	SQUARENESS			
∠	RUNOUT			
∠	ANGULARITY			
⊙	CONCENTRICITY			
⊙	COAXIALITY			
⊙	SYMMETRY			

UNLESS OTHERWISE SPECIFIED IN THIS DRAWING, ALL DIMENSIONS SHALL BE TO THE NEAREST TOLERANCE SHOWN THEREIN.

DO NOT SCALE. PRINT

SCALE: 1/4" = 1"

THIS DRAWING IS THE PROPERTY OF WESTRON CORPORATION. IT IS TO BE USED ONLY FOR THE MANUFACTURE AND REPRODUCTION OF THE PARTS AND ASSEMBLIES SHOWN THEREIN.

WESTRON CORPORATION  
A SUBSIDIARY OF GENERAL BONDING CORPORATION

DATE: 11/19/85  
DRAWN BY: J. W. BROWN  
CHECKED BY: J. W. BROWN

CONTROLLED IN FEED TECH. SIGN CONTROL ASSEMBLY.  
(SEE B/L 81-08-001)

DRAWING NO. 401-0140