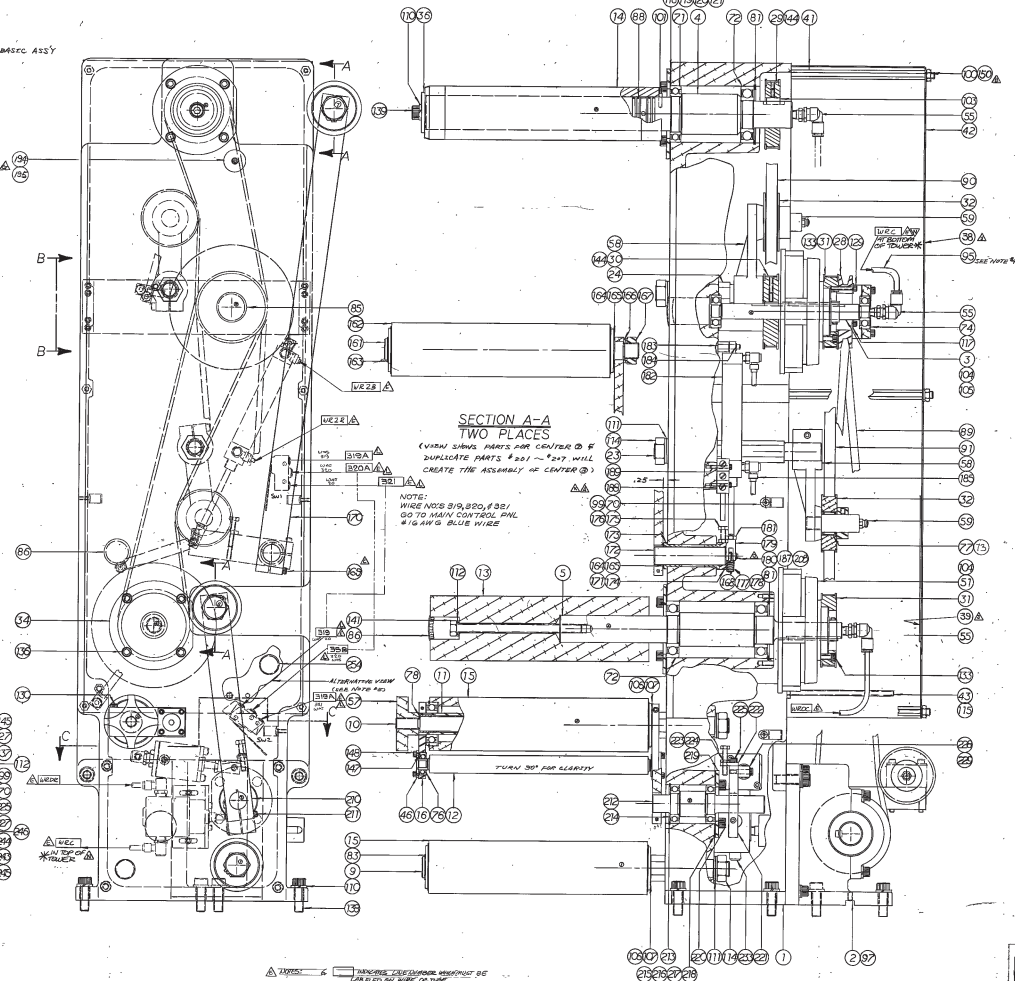
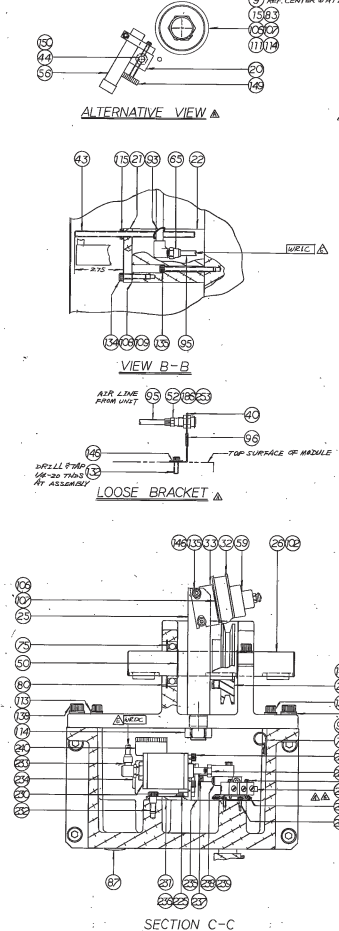


REV	NO	DATE	BY	DESCRIPTION
1	1			ISSUED FOR MANUFACTURE
2	1			REVISION TO MATERIAL SPECIFICATION
3	1			REVISION TO DIMENSIONS TO FIT WITH OTHER PARTS
4	1			REVISION TO DIMENSIONS TO FIT WITH OTHER PARTS
5	1			REVISION TO DIMENSIONS TO FIT WITH OTHER PARTS
6	1			REVISION TO DIMENSIONS TO FIT WITH OTHER PARTS
7	1			REVISION TO DIMENSIONS TO FIT WITH OTHER PARTS
8	1			REVISION TO DIMENSIONS TO FIT WITH OTHER PARTS
9	1			REVISION TO DIMENSIONS TO FIT WITH OTHER PARTS
10	1			REVISION TO DIMENSIONS TO FIT WITH OTHER PARTS

REV	NO	DATE	BY	DESCRIPTION
1	1			ISSUED FOR MANUFACTURE
2	1			REVISION TO DIMENSIONS TO FIT WITH OTHER PARTS
3	1			REVISION TO DIMENSIONS TO FIT WITH OTHER PARTS
4	1			REVISION TO DIMENSIONS TO FIT WITH OTHER PARTS
5	1			REVISION TO DIMENSIONS TO FIT WITH OTHER PARTS
6	1			REVISION TO DIMENSIONS TO FIT WITH OTHER PARTS
7	1			REVISION TO DIMENSIONS TO FIT WITH OTHER PARTS
8	1			REVISION TO DIMENSIONS TO FIT WITH OTHER PARTS
9	1			REVISION TO DIMENSIONS TO FIT WITH OTHER PARTS
10	1			REVISION TO DIMENSIONS TO FIT WITH OTHER PARTS



REV	NO	DATE	BY	DESCRIPTION
1	1			ISSUED FOR MANUFACTURE
2	1			REVISION TO DIMENSIONS TO FIT WITH OTHER PARTS
3	1			REVISION TO DIMENSIONS TO FIT WITH OTHER PARTS
4	1			REVISION TO DIMENSIONS TO FIT WITH OTHER PARTS
5	1			REVISION TO DIMENSIONS TO FIT WITH OTHER PARTS
6	1			REVISION TO DIMENSIONS TO FIT WITH OTHER PARTS
7	1			REVISION TO DIMENSIONS TO FIT WITH OTHER PARTS
8	1			REVISION TO DIMENSIONS TO FIT WITH OTHER PARTS
9	1			REVISION TO DIMENSIONS TO FIT WITH OTHER PARTS
10	1			REVISION TO DIMENSIONS TO FIT WITH OTHER PARTS

REV	NO	DATE	BY	DESCRIPTION
1	1			ISSUED FOR MANUFACTURE
2	1			REVISION TO DIMENSIONS TO FIT WITH OTHER PARTS
3	1			REVISION TO DIMENSIONS TO FIT WITH OTHER PARTS
4	1			REVISION TO DIMENSIONS TO FIT WITH OTHER PARTS
5	1			REVISION TO DIMENSIONS TO FIT WITH OTHER PARTS
6	1			REVISION TO DIMENSIONS TO FIT WITH OTHER PARTS
7	1			REVISION TO DIMENSIONS TO FIT WITH OTHER PARTS
8	1			REVISION TO DIMENSIONS TO FIT WITH OTHER PARTS
9	1			REVISION TO DIMENSIONS TO FIT WITH OTHER PARTS
10	1			REVISION TO DIMENSIONS TO FIT WITH OTHER PARTS

1. DIMENSIONS TO FIT WITH OTHER PARTS TO BE USED FOR MANUFACTURE.

2. DIMENSIONS TO FIT WITH OTHER PARTS TO BE USED FOR MANUFACTURE.

3. DIMENSIONS TO FIT WITH OTHER PARTS TO BE USED FOR MANUFACTURE.

4. DIMENSIONS TO FIT WITH OTHER PARTS TO BE USED FOR MANUFACTURE.

5. DIMENSIONS TO FIT WITH OTHER PARTS TO BE USED FOR MANUFACTURE.

6. DIMENSIONS TO FIT WITH OTHER PARTS TO BE USED FOR MANUFACTURE.

7. DIMENSIONS TO FIT WITH OTHER PARTS TO BE USED FOR MANUFACTURE.

8. DIMENSIONS TO FIT WITH OTHER PARTS TO BE USED FOR MANUFACTURE.

9. DIMENSIONS TO FIT WITH OTHER PARTS TO BE USED FOR MANUFACTURE.

10. DIMENSIONS TO FIT WITH OTHER PARTS TO BE USED FOR MANUFACTURE.

WASTE REWIND ASSY

DO NOT SCALE PRINT

NOTES:

1. PART NUMBERS OF THIS FAMILY DRAWING ARE SHOWN AS FOLLOWS:

ITEM NO.	DESCRIPTION
1	WASTE REWIND ASSY
2	WASTE REWIND ASSY
3	WASTE REWIND ASSY
4	WASTE REWIND ASSY
5	WASTE REWIND ASSY
6	WASTE REWIND ASSY
7	WASTE REWIND ASSY
8	WASTE REWIND ASSY
9	WASTE REWIND ASSY
10	WASTE REWIND ASSY

2. WHEN DRAWING IS USED FOR ASSEMBLY, THE QUANTITY OF THE QUANTITY OF ITEM 10 IS TO BE DECREASED FROM 2 TO 1, ALSO FROM 3 TO 2 FOR ITEM 10 IS TO BE DECREASED FROM 10 TO 8 FOR ITEM 11, FROM 6 TO 5 FOR ITEM 12, FROM 4 TO 3 FOR ITEM 13, FROM 2 TO 1 FOR ITEM 14, FROM 1 TO 0 FOR ITEM 15, FROM 0 TO 1 FOR ITEM 16, FROM 1 TO 2 FOR ITEM 17, FROM 2 TO 3 FOR ITEM 18, FROM 3 TO 4 FOR ITEM 19, FROM 4 TO 5 FOR ITEM 20, FROM 5 TO 6 FOR ITEM 21, FROM 6 TO 7 FOR ITEM 22, FROM 7 TO 8 FOR ITEM 23, FROM 8 TO 9 FOR ITEM 24, FROM 9 TO 10 FOR ITEM 25, FROM 10 TO 11 FOR ITEM 26, FROM 11 TO 12 FOR ITEM 27, FROM 12 TO 13 FOR ITEM 28, FROM 13 TO 14 FOR ITEM 29, FROM 14 TO 15 FOR ITEM 30, FROM 15 TO 16 FOR ITEM 31, FROM 16 TO 17 FOR ITEM 32, FROM 17 TO 18 FOR ITEM 33, FROM 18 TO 19 FOR ITEM 34, FROM 19 TO 20 FOR ITEM 35, FROM 20 TO 21 FOR ITEM 36, FROM 21 TO 22 FOR ITEM 37, FROM 22 TO 23 FOR ITEM 38, FROM 23 TO 24 FOR ITEM 39, FROM 24 TO 25 FOR ITEM 40, FROM 25 TO 26 FOR ITEM 41, FROM 26 TO 27 FOR ITEM 42, FROM 27 TO 28 FOR ITEM 43, FROM 28 TO 29 FOR ITEM 44, FROM 29 TO 30 FOR ITEM 45, FROM 30 TO 31 FOR ITEM 46, FROM 31 TO 32 FOR ITEM 47, FROM 32 TO 33 FOR ITEM 48, FROM 33 TO 34 FOR ITEM 49, FROM 34 TO 35 FOR ITEM 50, FROM 35 TO 36 FOR ITEM 51, FROM 36 TO 37 FOR ITEM 52, FROM 37 TO 38 FOR ITEM 53, FROM 38 TO 39 FOR ITEM 54, FROM 39 TO 40 FOR ITEM 55, FROM 40 TO 41 FOR ITEM 56, FROM 41 TO 42 FOR ITEM 57, FROM 42 TO 43 FOR ITEM 58, FROM 43 TO 44 FOR ITEM 59, FROM 44 TO 45 FOR ITEM 60, FROM 45 TO 46 FOR ITEM 61, FROM 46 TO 47 FOR ITEM 62, FROM 47 TO 48 FOR ITEM 63, FROM 48 TO 49 FOR ITEM 64, FROM 49 TO 50 FOR ITEM 65, FROM 50 TO 51 FOR ITEM 66, FROM 51 TO 52 FOR ITEM 67, FROM 52 TO 53 FOR ITEM 68, FROM 53 TO 54 FOR ITEM 69, FROM 54 TO 55 FOR ITEM 70, FROM 55 TO 56 FOR ITEM 71, FROM 56 TO 57 FOR ITEM 72, FROM 57 TO 58 FOR ITEM 73, FROM 58 TO 59 FOR ITEM 74, FROM 59 TO 60 FOR ITEM 75, FROM 60 TO 61 FOR ITEM 76, FROM 61 TO 62 FOR ITEM 77, FROM 62 TO 63 FOR ITEM 78, FROM 63 TO 64 FOR ITEM 79, FROM 64 TO 65 FOR ITEM 80, FROM 65 TO 66 FOR ITEM 81, FROM 66 TO 67 FOR ITEM 82, FROM 67 TO 68 FOR ITEM 83, FROM 68 TO 69 FOR ITEM 84, FROM 69 TO 70 FOR ITEM 85, FROM 70 TO 71 FOR ITEM 86, FROM 71 TO 72 FOR ITEM 87, FROM 72 TO 73 FOR ITEM 88, FROM 73 TO 74 FOR ITEM 89, FROM 74 TO 75 FOR ITEM 90, FROM 75 TO 76 FOR ITEM 91, FROM 76 TO 77 FOR ITEM 92, FROM 77 TO 78 FOR ITEM 93, FROM 78 TO 79 FOR ITEM 94, FROM 79 TO 80 FOR ITEM 95, FROM 80 TO 81 FOR ITEM 96, FROM 81 TO 82 FOR ITEM 97, FROM 82 TO 83 FOR ITEM 98, FROM 83 TO 84 FOR ITEM 99, FROM 84 TO 85 FOR ITEM 100.

3. ALTERNATIVE VIEW WILL SHOW UP ONLY IF DIMENSIONS ARE AS SHOWN ON DRAWING.

REV	NO	DATE	BY	DESCRIPTION
1	1			ISSUED FOR MANUFACTURE
2	1			REVISION TO DIMENSIONS TO FIT WITH OTHER PARTS
3	1			REVISION TO DIMENSIONS TO FIT WITH OTHER PARTS
4	1			REVISION TO DIMENSIONS TO FIT WITH OTHER PARTS
5	1			REVISION TO DIMENSIONS TO FIT WITH OTHER PARTS
6	1			REVISION TO DIMENSIONS TO FIT WITH OTHER PARTS
7	1			REVISION TO DIMENSIONS TO FIT WITH OTHER PARTS
8	1			REVISION TO DIMENSIONS TO FIT WITH OTHER PARTS
9	1			REVISION TO DIMENSIONS TO FIT WITH OTHER PARTS
10	1			REVISION TO DIMENSIONS TO FIT WITH OTHER PARTS

4. DIMENSIONS TO FIT WITH OTHER PARTS TO BE USED FOR MANUFACTURE.

REV	NO	DATE	BY	DESCRIPTION
1	1			ISSUED FOR MANUFACTURE
2	1			REVISION TO DIMENSIONS TO FIT WITH OTHER PARTS
3	1			REVISION TO DIMENSIONS TO FIT WITH OTHER PARTS
4	1			REVISION TO DIMENSIONS TO FIT WITH OTHER PARTS
5	1			REVISION TO DIMENSIONS TO FIT WITH OTHER PARTS
6	1			REVISION TO DIMENSIONS TO FIT WITH OTHER PARTS
7	1			REVISION TO DIMENSIONS TO FIT WITH OTHER PARTS
8	1			REVISION TO DIMENSIONS TO FIT WITH OTHER PARTS
9	1			REVISION TO DIMENSIONS TO FIT WITH OTHER PARTS
10	1			REVISION TO DIMENSIONS TO FIT WITH OTHER PARTS

5. DIMENSIONS TO FIT WITH OTHER PARTS TO BE USED FOR MANUFACTURE.