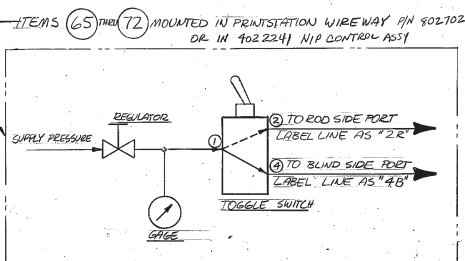
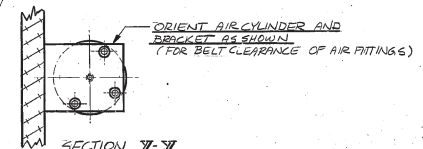
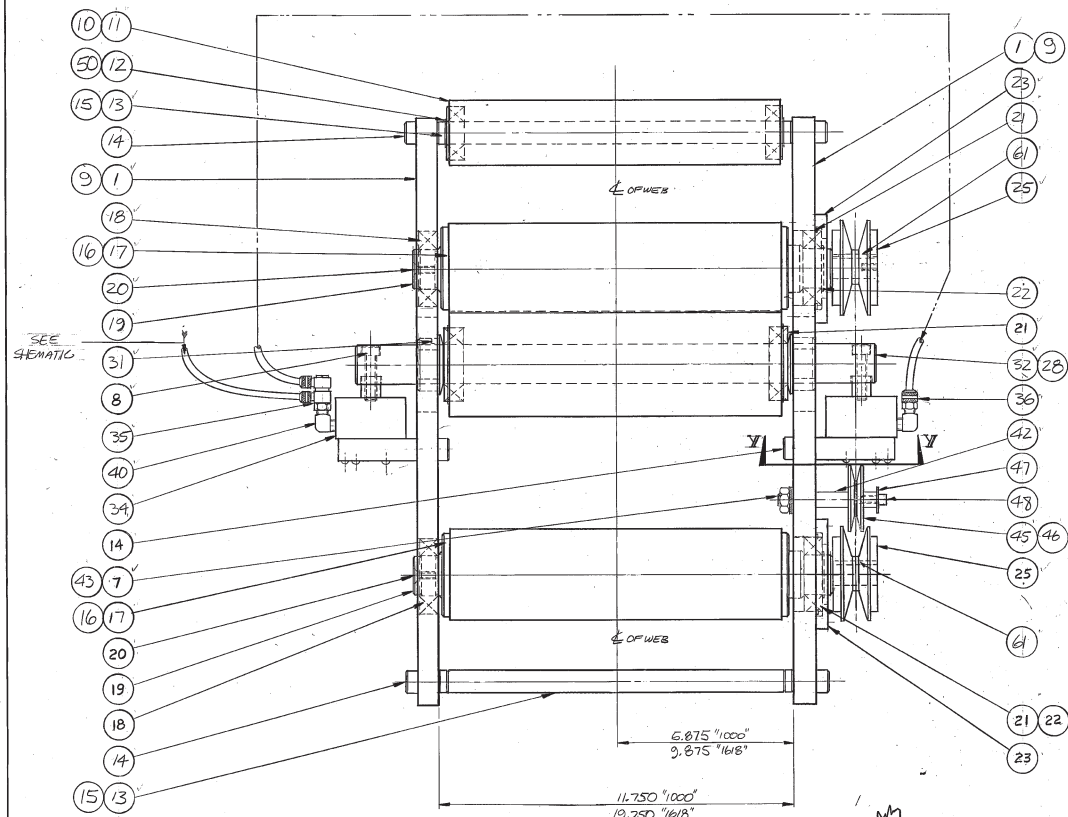


ECN NO.	REV.	DATE	BY	DESCRIPTION
4606	B	10/31/87	SK	CHANGED ITEM 36, ADDED ITEM 40
5086	C	5/10/88	AF	ITEM 39 (2) 36-4708 1/2 DIA X 1/4 LG S.S. WAS (A) 26-4704 (8/14)
5434	D	8/15/88	SK	ITEM #11 WAS 301-0494, ITEM #49 WAS 71-4373
5504	E	8/24/88	SK	ITEM #49 WAS 71-44 2B
7203	F	6/10/89	SK	ITEM #49 WAS 71-44 33
7204	G	6/10/89	SK	71-4452 #9 71-4374, 71-4452 WAS 71-4458, 71-4458, 71-4458, 71-4458 (2)
80884	H	8-24-93	RC	SEE PCD 80384
81168	J	10-31-94	RY	ITEM #66 WAS 201-0818



ITEM QTY.	PART NO.	DESCRIPTION
72	1	60-4041 AIR SWITCH
71	1	64-408 GAGE
70	1	60-4121 REGULATOR
69		
48	4	21-4304 #10-24 X 5/8" B.H.C.S.
67	1	201-0776 LEGEND PLATE
66	1	8027022 WIREWAY UPPER 4" NIP CTL.
65	1	201-0775 BEZEL
64	1	71-4468 BELT - 3L 330
63	1	4022241 NIP CONTROL ASSY
62		
61	2	38-4105 3/16 X 1/16 SQ KEY
60		
59		
58		
57		
56		
55		
54	2	021-4353 #10-32 X 1/2 B.H.C.S.
53	1	201-3226 GUARD (NOT SHOWN)
52		
51		
50	1	AA-4036 RGT. RING
49	1	71-44 59 BELT - 3L 310
48	1	020-4403 1/4 20 X 1/2 S.H.C.S.
47	1	040-4002 1/2 FLAT WASHER
46	1	14-4271 OILITE BEARING
45	1	71-4380 PULLEY
44		
43	2	40-4506 3/8" RATCHET WASHER
42	1	101-0497 PULLEY SHAFT
41	1	304-0490 NIP ROLL
40	4	62-9117 ELBOW
39		
38	6	21-4306 #10-24 X 1" B.H.C.S.
37	2	201-0820 MOUNTING BRACKET
36	2	62-5003 1/2 NUT X 1/4 TUBE BENT/CONNECTED
35	2	62-5003 1/2 NUT X 1/4 TUBE TEE
34	2	61-4087 AIR CYLINDER
33		
32	1	301-0605 NIP ROLL SHAFT
31	2	201-0819 SHAFT SLEEVE
30		
29	1	302-0496 NIP ROLL
28	1	302-0605 NIP ROLL SHAFT
27		
26		
25	2	71-44 57 VARIABLE PITCH PULLEY
24	8	21-4405 1/2 20 X 3/4" B.H.C.S.
23	2	451027 BEARING RETAINER
22	2	44-4036 RETAINING RING
21	4	10-4097 BALL BEARING
20	2	23-4404 1/4 20 X 9/16" F.H.C.S.
19	2	19-50773 TERN WASHER
18	2	10-4004 BALL BEARING
17	2	401-0576 DRIVER IDLER ROLL
16	2	401-2495 DRIVER IDLER ROLL COVERED
15	2	318-0428 SPACER SHAFT
14	6	26-4708 1/2 DIA X 1/4 S.S.
13	2	203-0692 SPACER SHAFT
12	2	44-4027 RETAINING RING
11	1	303-0494 2 1/2" DIA IDLER ROLL COVERED
10	2	304-0631 4" DIA IDLER ROLL COVERED
9	2	8041002 SIDE PLATE
8	6	20-4608 3/8-16 X 1/4" S.H.C.S.
7	5	47-4103 3/8-16 Jam NUT
6	4	101-0635 STANDOFF
5	4	203-0725 CLAMP BLOCK
4	2	20-4612 3/8-16 X 2 1/4" S.H.C.S.
3	2	26-4712 1/2 DIA X 2 1/4" S.S.
2	2	301-0604 LOCATING PLATE
1	2	401-0597 SIDE PLATE

GEOMETRIC SYMBOLS	MATERIAL	CITY	QTY.	PART NO.	DESCRIPTION
FLATNESS	FINISH	DATE	DATE	Cobtron CORPORATION	
STRAIGHTNESS	STD. DIM. TOL.	CHK	12/18/87	A SUBSIDIARY OF GENERAL BONDING CORPORATION	
ALIGNMENT	DEC. ± .005	DATE		RE-LAMINATION ROLLER ASSEMBLY	
PARALLELISM	FRACTION ± .015	DATE			
SQUARENESS	ANGLE ± .030	DATE			
ROUNDNESS	PART TO BE FREE OF BURRS, SHARP EDGES AND SHARP CORNERS.	DATE		SCALE: HALF	
ANGULARITY	UNLESS OTHERWISE SPECIFIED, ALL MACHINED SURFACES TO BE FINISHED TO THE FOLLOWING TOLERANCES:	DATE		DRAWING NO. 400-0594	
ROUNDNESS	DO NOT SCALE PRINT	DATE			
CYLINDRICITY		DATE			
ECCENTRICITY		DATE			
SYMMETRY		DATE			

MICROFILMED