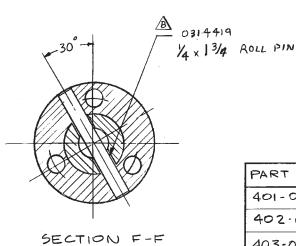
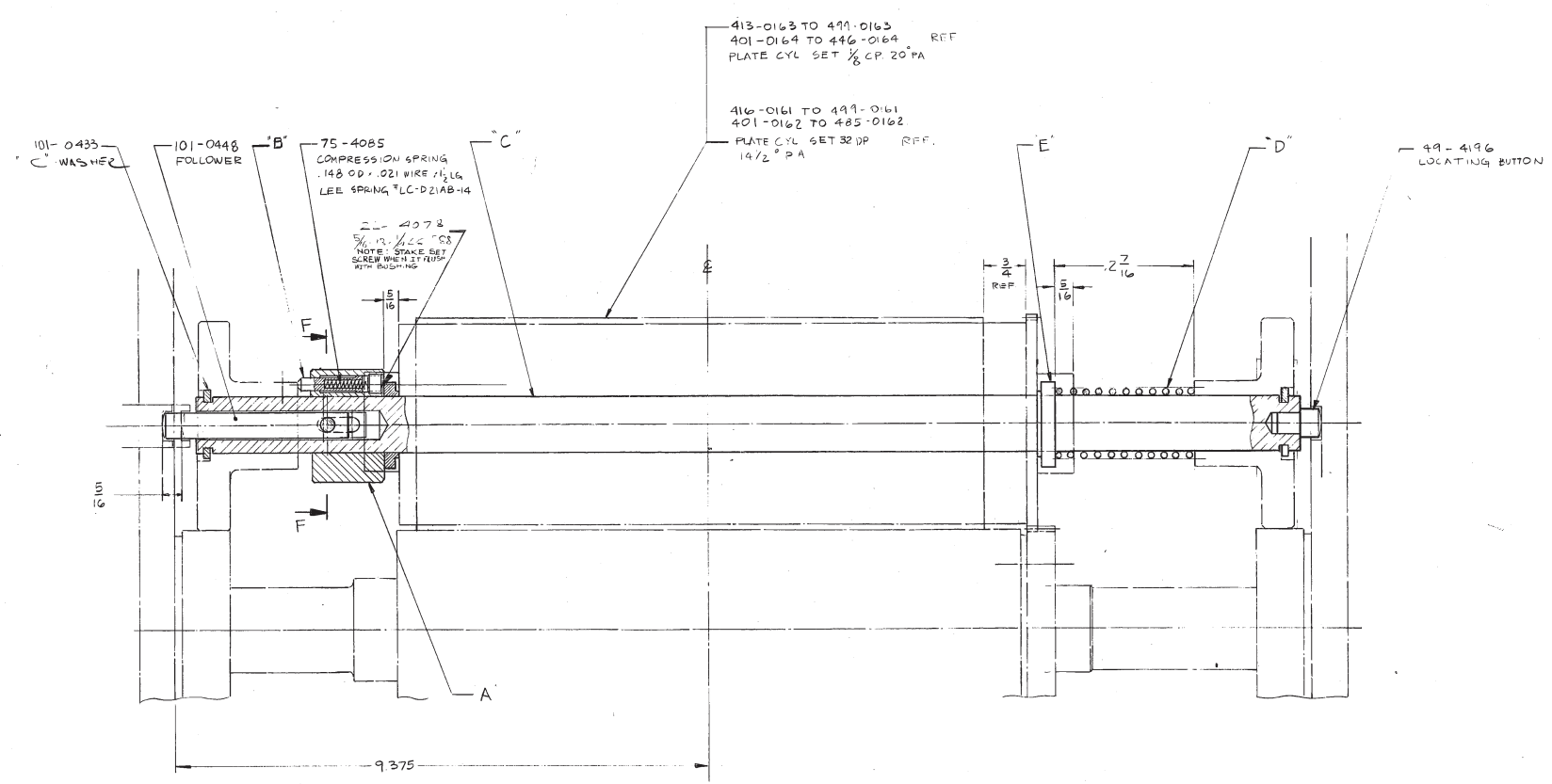


EDN NO.	REVISION	DATE	BY	DESCRIPTION
2186	1	6/21/68	CK	200-2016-2016 W/200 401-0236-0466
2195	E	5/1/77	KAM	CHANGED 0994189 TO 0314419



NOTE: REFER TO 301-0576 FOR SHAFT ASSEMBLY FOR 5/4 - 5/8 REPEAT.

PART NO	A	B	C	D	E	USED FOR
401-0236	201-2016	101-0467	201-0732	75-4092	206-0729	7 1/2-24" REPEAT
402-0236	202-2016	102-0467	202-0732	75-4089	10-4216	6-7 3/8 REPEAT
403-0236	201-2016	101-0467	201-0732	75-4092	206-0729	7 1/2-24" REPEAT

GEOMETRIC SYMBOLS / CHARACTERISTIC	MATERIAL	ITEM QTY.	PART NO.	DESCRIPTION
FLATNESS STRAIGHTNESS ALIGNMENT PARALLELISM SQUARENESS RUNOUT ANGULARITY ROUNDNESS CYLINDRICITY CONCENTRICITY ECCENTRICITY SYMMETRY	FINISH STD. DIM. TOL. DEC. ± .005 FRAC. ± .015 ANGLES ± 0°30' PART TO BE FREE OF BURRS, SHARP EDGES AND SHARP CORNERS. UNLESS OTHERWISE SPECIFIED ALL MACHINED SURFACES TO BE FINISHED TO THE FOLLOWING TOLERANCES: DO NOT SCALE PRINT	DRAWN BY: V. FELINDOV DATE: 10-15-67 CHECKED BY: W. STANLEY DATE: 10-15-67 APPR BY:	100 400-0236	<b>Deatron CORPORATION</b> A SUBSIDIARY OF GENERAL BONDING CORPORATION <b>PLATE CYLINDER SHAFT</b> <b>A-ASSEMBLY</b>